

Minimize Application

Check this check box to execute the application entered in the Command File text box as a minimized application. This means the application will appear on the Windows desktop as an icon. Double click on the application's icon to restore it to its normal state.

If you do not check this check box, the application will run in its normal state.

Define File Browse Pattern

This command button allows you to define your own File Browse file pattern.

To define a pattern, use the following guidelines:

- * Enter a file pattern in the format '*.filetype'. For example, '*.exe' will show all files that have a filetype of '.exe' (or .EXE - the case does not matter)

- * Separate additional file patterns with a ';'. For example, '*.bat;*.com;*.exe' will display all files that have a filetype of .bat, .com, or .exe.

File Browse

This button takes you to the File Browse Selection windows. This window allows you to scan all available drives for a program to execute.

Close Command Runner

This command will close and exit the Command Runner program.

OK Button

This button will execute the program listed in the Command File text box. If there is no command or there is an invalid command in the Command File text box, Command Runner will give you an informational error message.

History List Check Box

If you check this check box, every command you execute is saved in the command history. If the command already exists, it is not added to the history list (case is also ignored). Once the list is full, the oldest command is dropped off the list to make room for the new command.

The default entry size for the history list is 10 entries. But, you may change this to any number between 1 and 99 by selecting the sub-menu choice Command History under the Program Settings menu choice.

Command History List

This list box contains the list of the commands you have executed most recently. Duplicates are not added to the list (case is also ignored) and, once the list is full, the oldest command is dropped of the list to make room for the new command.

If you want commands added to this list box, you must check the 'Add Command To History List' check box.

The default number of commands Command Runner remembers is 10. You may change this to any number between 1 and 99 by selecting the 'Command History' sub-menu from the Program Settings menu item.

Move File Pattern Up

Pressing this command button moves the selected file pattern up the File List towards the top of the File Pattern List.

If you move the selected file pattern to the top of the File Pattern list, this entry becomes the default file pattern.

File Pattern List

This list box contains the file patterns the Select File browse window uses to screen files for your selection.

The file pattern at the top of the File Pattern List is the default file pattern.

New File Pattern Text Box

This text box holds your new file pattern definition.

A file pattern definition usually takes the form: '*.filetype'. For example, '*.BAT' will show all files with a filetype of .BAT.

You can also be specific about the file names you are looking for. For example, 'W*.COM' would find all files that began with a 'W' and had a filetype of '.COM.'

If you wish to enter multiple file patterns on a single line, separate each file pattern with ';'. For example, the file pattern '*.BAT; *.COM; *.EXE' will show all files with a filetype of either '.BAT', '.COM', or '.EXE'.

File Browse File Name

This field allows you to enter a file name to execute one of two ways:

- * You may select a file from the File Selection list box and the file will appear in this text box
- * You may type the name of a file you wish to execute directly in the text box.

Select File Browse Filetype

Use this list box to select the file or program you wish to execute. You may use the Def Type button to change the entries that appear in this list.

File Browse OK Button

Click on this command button once you have chosen a file to execute. This command will copy the file you selected to the Command Line text box on the main Command Runner window.

Cancel File Browse

This command button will cancel the File Browse activity.

File Browse File Selection

This list box allows you to choose a file to execute.

File Browse Directory Change

This list box allows you to select the directory you wish to examine for executable files.

File Browse Drive Change

This list box allows you to select drives to examine for executable files.

Cancel Command History List Changes

This command button will cancel the changes you make to the Command History list length.

Accept Changes To Command History List Length

Normal Text

Command History List Length

Enter the new Command History List length (a number from 1 to 99) in this text box.

Table of Contents

[Overview](#)

[Program Requirements](#)

[Installation](#)

[Setup](#)

[Using Command Runner](#)

[License Information](#)

[Registering](#)

[Other Products Available](#)

Copyright and Distribution

Copyright

This software is protected under the copyright laws of the United States and foreign countries. All rights are reserved to Brian D. Cutler. Violations of copyright laws are investigated by the FBI. Distribution of products owned by Brian D. Cutler implies that you have read and agreed to the distribution terms outlined below.

Distribution

If you are a private individual, then you have the right to distribute the Shareware version of this product if you:

- * Distribute ALL files
- * Do not alter ANY file in ANY way
- * Distribute the Shareware version ONLY. Do not distribute the registered version.

If you are a Vendor or BBS Operator, you have permission to distribute this package with the same terms and conditions as described above for an individual user.

If you distribute Shareware via mail order, BBS-type system, retail setting in racks, store displays, vending machines, at computer fairs, or on CD-ROM, you may distribute this program as it is, without any changes other than expanding files in the ZIP file (see the terms and conditions for an individual user above). You must identify the program by Name and Version and include the registration fee in the program description. You must also CLEARLY identify the program as Shareware. You may NOT distribute the registered version without contacting the author and obtaining licensing terms and conditions.

U.S. Government Information

Use, duplication, or disclosure by the U.S. Government of the computer software and documentation in this package shall be subject to the restricted rights applicable to commercial computer software as set forth in subdivision (b)(3)(ii) of the Rights in Technical Data and Computer Software clause at 52.227-7013 (DFARS 52.227-7013). The Contractor/manufacturer is Brian D. Cutler, 1723 Logmill Lane, Gaithersburg, MD 20879 USA.

Installation Instructions

Use the SETUP.EXE program contained on the distribution to install Command Runner (CMDRUN.EXE).

List of Files

The following files constitute Command Runner:

- * CMDRUN.EXE - the actual program
- * CMDRUN.HLP - this help file
- * FILE_ID.DIZ - Program description information for Bulletin Board Services (shareware version only)
- * DESCRIBE.DOC - Sample descriptions for catalogs, BBSs, etc.
- * HISTORY.DOC - Revision history
- * INSTALL.DOC - Important installation instructions
- * LICENSE.DOC - Important License and Usage Information
- * OMB.DOC - ASP Ombudsman Statement
- * OTHERSW.DOC - List of other SW programs the author has available
- * README.DOC - Last minute changes and additions
- * REGISTER.DOC - Registration Information
- * SITELICE.DOC - Site License Information
- * SYSOP.DOC - Information for Bulletin Board System distribution
- * VENDOR.DOC - Information and restrictions for disk vendors, distributors, user groups, and more
- * WARRANTY.DOC - Important Warranty Information
- * REGISTER.FRM - Registration Form
- * DDEML.DLL - Windows Dynamic Link Library
- * MMSYSTEM.DLL - Windows Dynamic Link Library used for music
- * SETUPKIT.DLL - Windows Dynamic Link Library used by the SETUP program
- * VBRUN300.DLL - the Microsoft Visual Basic 3.0 Runtime Library
- * VER.DLL - Windows Dynamic Link Library used by the SETUP program

Installation

Follow the installation instructions below. All you need do is run the SETUP.EXE program. This will install the Command Runner program to your harddrive.

- 1.) Place the diskette in the diskette drive and execute the SETUP.EXE program.
- 2.) You have a decision when it asks you which directory to install the program files to. You may accept the default or name a directory of your choice.
- 3.) If this is an unregistered version of Command Runner, print the file REGISTER.FRM and mail to the author with the proper registration fee.

License Information

[Definition of Shareware](#)

[Usage Duration](#)

[Copyright and Distribution Information](#)

[Warranty](#)

[U.S. Government Information](#)

Command Runner

Copyright 1995

Brian D. Cutler
1723 Logmill Lane
Gaithersburg, MD 20879

Other Products Available

BMP and Music Screen Saver

This Windows Screen Saver allows you to display .BMP and .WMF files (single or cycle through multiples) while you play .MID or .WAV files through a windows-supported sound card (again, play a single or multiple files). This program works through the Windows Control Panel Screen Saver function.

Cost: \$10.00 single-user copy

Launch Control Screen Saver

This Windows Screen Saver displays a simulation of a launch control facility control panel on your screen. See the countdown timer and radar sweep scope along with a host of other buttons, gauges, and lights keep you and your visitors entertained. Ideal conversation piece for work or office. This program works through the Windows Control Panel Screen Saver function.

Cost: \$10.00 single-user copy

Starship Command Screen Saver

This Windows Screen Saver allows you to display .BMP and .WMF files (single or cycle through multiples) while you play .MID or .WAV files through a windows-supported sound card (again, play a single or multiple files).

The program uses the background of an animated starship bridge control center as the background for the graphics display and sound and/or music playback. This program works through the Windows Control Panel Screen Saver function.

Cost: \$10.00 single-user copy

Command Runner

Have you ever wanted to have more control over how you run programs than the minimal control Program Manager gives you with its RUN command? Want no more! Command Runner provides the same functionality as the Program Manager RUN command and a lot more! Some of the features include:

- * A history list that remembers your commands in a history list so you can run them again (just like the Windows NT version of Program Manager's RUN command)

- * The ability to set the number of entries in the history list

- * Fully customizable user-defined file search patterns when browsing for files

- * The ability to turn the command history on and off

- * The ability to leave Command Runner running when you start another application

- * The ability to have Command Runner remember its location on the screen

- * The ability to have Command Runner be the top most window.

Take "command" of your program execution now ... with Command Runner!

Cost: \$15.00 single-user copy

Registration Magician!

As a shareware author, have you looked for an easy way to register copies of the software you sell? This program provides it! Write registration and user information into your

executable modules! Automatically build distribution diskettes! Track program and user information! This program provides many features that will make your shareware business secure and easy to track. Some of the features are:

- * Up to eight fields of 10 characters-each registration information writeable to executable modules in encoded form
- * Optional user name in encoded form
- * Optional company name in encoded form
- * Full help facility to guide you through the program
- * Full-featured database that lets you sort, track, and report on program, user, and even sales information
- * Sample source code
- * Full tutorial (registered version).

Cost: \$30.00 single-user copy

Registration Form

Command Runner
Version 1.0
Registration Form

Mail Form To:
Brian D. Cutler
1723 Logmill Lane
Gaithersburg, MD 20879

Ship to:
Name:

Address:

Phone:

PRODUCT DESCRIPTION	QTY	UNIT PRICE	TOTAL
Single User Version Of <u>Command Runner</u>		\$15.00	
Additional Licenses (1-50)		\$5.00	
Additional Licenses (1-100)		\$10.00	
Additional Licenses (1-200)		\$15.00	
Additional Licenses (1-300)		\$20.00	
Additional Licenses (1-400)		\$25.00	
Additional Licenses (1-n)		\$30.00	
SUB-TOTAL	XXX	XXXXXX	
MD Residents add 5% Sales Tax	XXX	XXXXXX	
Shipping and Handling \$2.50 per physical disk (Continental United States)	XXX	per disk	
Shipping and Handling		\$8.00	

	\$8.00 per physical disk		XXX		per disk	
	(Non-Continental United States					
	and foreign orders)					
+-----+-----+-----+-----+						
	GRAND TOTAL		XXX		XXXXXX	
+-----+-----+-----+-----+						

Please make personal checks, cashier's checks, or money orders payable to: Brian D. Cutler

For additional multiple copy license information, please see REGISTER.TXT or contact the author.

Registering

Trial Period

This program is Shareware, you may evaluate it for a period of no more than 30 days. After this time you must either register (read REGISTER.TXT) or remove it from your system. Failure to comply with this condition is a violation of United States and international copyright law. This program is fully functional, however you will receive the latest version upon registering. Please register if you use this program for more than the trial period.

You may register this program by filling in the form included with the program (look for file REGISTER.FRM and print it out) or print the form by pressing the Print Form Button on the Registration Screen. You call up the Registration Screen by clicking on the Register Button on the Main Setup Screen.

Once you register the program, you will receive the latest version of the registered program and will no longer have access to the Registration Screen.

Benefits of Registering

By registering this product, you receive the following benefits:

- 1.) Ninety (90) days support for any detected problems (including money back if not completely satisfied)
- 2.) The latest version of the program

Printing A Registration Form

You can print a Registration Form by: clicking on the Print Form Button on the Registration Screen or clicking on the Registration Form topic below and printing the topic. This will send a copy of the registration form to your printer (this is the same form you will find in the file REGISTER.FRM). Fill out the form, enclose the appropriate US funds (personal check, cashier's check, or money order), and mail to the author's address.

[Registration Form](#)

Program Requirements

Command Runner has the following requirements:

Software

- * Microsoft Windows 3.1 and above
- * DOS 4.0 and above
- * DDEML.DLL, MMSYSTEM.DLL, SETUPKIT.DLL, and VER.DLL - all included

Hardware

- * Intel-family 80286 or above processor (80486 and above will give the best performance)
- * EGA or VGA video card (for displaying graphics)
- * Windows-supported sound card (for playing music)

Definition of Shareware

This program is Shareware. It is NOT Public Domain (Free) software. Just like Commercial software, you must pay for the continued use of this program. The differences between Shareware and Commercial Software center around two distinct points: distribution method and time of payment. Commercial software is almost always distributed via "normal" channels such as computer stores or mail order companies. Shareware is distributed via these channels as well as others such as vending machines, racks in non-computer stores, computer shows, CD-ROM "collections", and bulletin boards. Payment for Commercial software is almost always due when you purchase the product. Shareware gives the user a "trial period" of usually 30 days or more to try the product. If the user likes the Shareware product, they pay for the right to continue using the program after the trial period. This is called "registering" the program. When you register a Shareware program, you get anything from simple right to continue using the software to an updated program with a printed manual to future versions or newer versions of the software.

Please remember that Copyright laws apply to both Shareware and commercial software, and the copyright holder retains all rights, with a few specific exceptions as stated below. Shareware authors are accomplished programmers, just like commercial authors, and the programs are of comparable quality. In both cases, there are good programs and bad ones. as stated above, the one of the main differences is in the method of distribution. The author specifically grants the right to copy and distribute the software, either to all and sundry or to a specific group. For example, some authors require written permission before a commercial disk vendor may copy their Shareware.

Please feel free to distribute the Shareware (unregistered) version of this program to your friends, co-workers, or Bulletin Board Services. Please do NOT distribute the registered version of this software. Just as with Commercial software, distribution of the registered version of this program is a violation of Copyright law and is against the law.

Thank you for supporting the Shareware concept!!

Usage Duration

You are allowed to use this program for a 30 day trial period from the time you first install it on your computer. At the end of the trial period, you should either register the program or remove it from your system.

[Registering](#)

Limited Warranty

THIS PROGRAM AND REFERENCE MATERIALS ARE SOLD "AS IS", WITHOUT WARRANTY AS TO THEIR PERFORMANCE, MERCHANTABILITY, OR FITNESS FOR ANY PARTICULAR PURPOSE. THE ENTIRE RISK AS TO THE RESULTS AND PERFORMANCE OF THIS PROGRAM IS ASSUMED BY YOU.

HOWEVER, TO THE ORIGINAL PURCHASER ONLY, THE PUBLISHER WARRANTS THE MAGNETIC DISKETTE ON WHICH THE PROGRAM IS RECORDED TO BE FREE FROM DEFECTS IN MATERIALS AND FAULTY WORKMANSHIP UNDER NORMAL USE FOR A PERIOD OF NINETY-DAYS FROM THE DATE OF PURCHASE. IF DURING THIS NINETY-DAY PERIOD THE DISKETTE SHOULD BECOME DEFECTIVE, IT MAY BE RETURNED TO THE PUBLISHER FOR A REPLACEMENT WITHOUT CHARGE, PROVIDED YOU SEND PROOF OF PURCHASE OF THE PROGRAM.

YOUR SOLE AND EXCLUSIVE REMEDY IN THE EVENT OF A DEFECT IS EXPRESSLY LIMITED TO REPLACEMENT OF THE DISKETTE AS PROVIDED ABOVE. IF FAILURE OF A DISKETTE HAS RESULTED FROM ACCIDENT OR ABUSE, THE PUBLISHER SHALL HAVE NO RESPONSIBILITY TO REPLACE THE DISKETTE UNDER THE TERMS OF THIS LIMITED WARRANTY.

ANY IMPLIED WARRANTIES RELATING TO THE PROGRAM, INCLUDING ANY IMPLIED WARRANTIES OF MERCHANTABILITY AND FITNESS FOR A PARTICULAR PURPOSE, ARE LIMITED TO A PERIOD OF NINETY DAYS FROM DATE OF PURCHASE (REGISTERED VERSION). PUBLISHER AND AUTHOR SHALL NOT BE LIABLE FOR INDIRECT, SPECIAL, OR CONSEQUENTIAL DAMAGES RESULTING FROM THE USE OF THIS PRODUCT. SOME STATES DO NOT ALLOW THE EXCLUSION OR LIMITATION OF INCIDENTAL OR CONSEQUENTIAL DAMAGES, SO THE ABOVE LIMITATIONS MIGHT NOT APPLY TO YOU. THIS WARRANTY GIVES YOU SPECIFIC LEGAL RIGHTS, AND YOU MAY ALSO HAVE OTHER RIGHTS THAT VARY FROM STATE TO STATE.

BECAUSE OF THE DIVERSITY OF CONDITIONS AND HARDWARE UNDER WHICH THIS PROGRAM MAY BE USED, THE USER IS ADVISED TO TEST THE PROGRAM THOROUGHLY BEFORE RELYING ON IT.

Setup Introduction

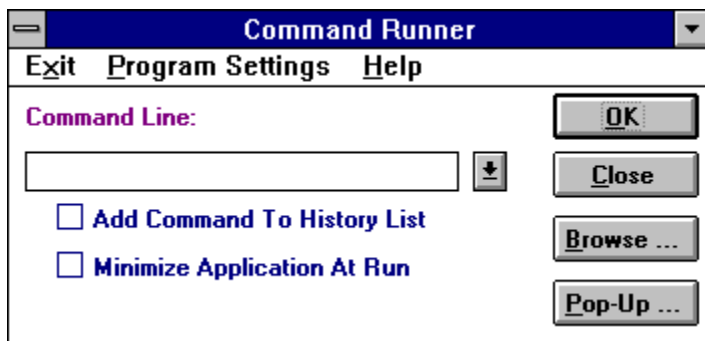
The setup for this program is quite simple. The first time you run Command Runner, it will create a template initialization file (CMDRUN.INI) in your Windows subdirectory. From then on, all you need do is select the appropriate options to tailor Command Runner's behavior to your needs.

Selecting Options

The following two sections will describe how you can tailor Command Runner to your needs. Please refer to the diagrams when necessary.

Command Runner Check Boxes

Command Runner has two check boxes available on the main window:



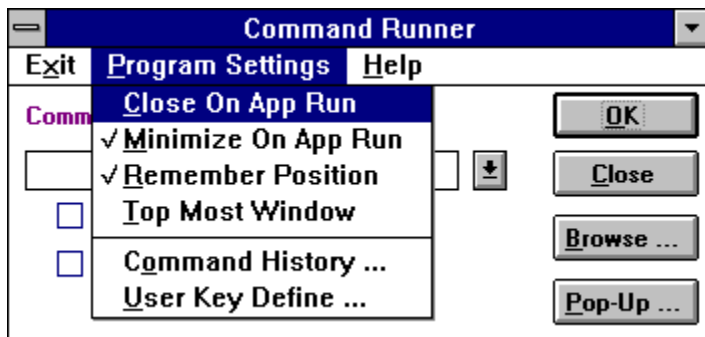
* Add Command To History List Check Box - adds the application you specify in the Command Line text box to the Command History list.

* Minimize Application At Run - minimizes the application you specify in the Command Line text box to an icon when the application runs.

Add Command To History List Minimize Application At Run

Program Settings Menu Options

Command Runner has 5 options you can choose from the Program Settings menu option:



* Close On App Run - closes Command Runner when it executes the application you specify in Command Line. If you check this option, Command Runner automatically unchecks the next option, Minimize On App Run.

* Minimize On App Run - minimizes Command Runner when it executes the application you specify in Command Line. If you check this option, Command Runner automatically unchecks the prior option, Close On App Run.

* Remember Position - remembers the location on the screen where Command Runner is positioned so Command Runner starts up in the same location on the screen. Otherwise, Command Runner starts up centered in the middle of the screen.

* Top Most Window - keeps Command Runner on top of all other open windows.

* Command History ... - calls up the Command History List Box length window (see below).

* User Key Define ... - calls up the User Settings screen which allows you to define the 12 user keys on the Pop-Up Toolbar (see below).

Command History ...

This window allows you to define the number of items you want Command Runner to remember in the History File list. The default is 10 and you can redefine this limit to a number from 1 to 99.



That's it - you are now ready to use Command Runner to make your program execution faster and easier!

Command History List Length

User Key Define ...

Clicking on this key brings up the User Settings screen. This screen allows you to define the 12 user keys that appear on the Pop-Up Tool Bar.

User Settings		
DESCRIPT	COMMAND	WORKING DIRECTORY
Dirutily	c:\utility\dr.exe	
EXCEL	x:\msoffice\excel.exe	x:\msoffice
Write	write.exe	
WORD	c:\word\word.exe	
Ctrl Panel	control.exe	
PCS	c:\windows\pcs\jascap.exe	c:\windows\pcs
PowerPoint	x:\msoffice\powrpt.exe	
PC X-Ware	c:\pcxware\xwui.exe	
Screen Sav	c:\windows\scsaver.scxr /s	
MS-DOS	c:\windows\dosprmt.pif	
Mail	c:\offutil\mailit.exe	c:\offutil\working
Access	x:\msoffice\access.exe	x:\msoffice

Remember Position On Screen
 Auto-Start Pop-Up

You can use this screen to define the following information:

- * The text that appears on the button faces on the Pop-Up Tool Bar buttons
- * The command that is executed when you click on one of the user buttons
- * The working directory for each command
- * Whether or not Command Runner should remember the position the Pop-Up Tool Bar is on the screen so Command Runner can restore the Pop-Up Tool Bar to that position
- * Whether or not Command Runner should automatically Start the Pop-Up Tool Bar when Command Runner starts.

[Description Field](#)

[Command Field](#)

[Working Directory Field](#)

[Remember Position Checkbox](#)

[Auto-Start Pop-Up CheckBox](#)

[OK Button](#)

[Cancel Button](#)

[Browse Button](#)

[Clear Button](#)

[Pop-Up Tool Bar](#)

Ignore Case For Duplicate Check

If you check this checkbox, duplicates are checked regardless of case when adding new file patterns to the File Pattern list box. For example, '*.EXE' is the same as '*.exe'.

If you leave this box unchecked, case is treated differently. Therefore, '*.EXE' is NOT the same as '*.exe'. You may wish to use case to visually differentiate each item in the File Pattern list box.

Add File Pattern In Uppercase

Checking this check box will automatically add the new file pattern you enter in the New File pattern text box in uppercase, regardless of the case you entered the new file pattern in.

Add A New File Pattern

This command button adds the new file pattern you enter in the New File Pattern text box to the File Pattern list box. The new file pattern automatically appears at the end of the File Pattern list.

You may use the Up, Down, and Default command buttons to change the location of the new file pattern in the File Pattern list.

Cancel New File Pattern Define

Use this command button to cancel the changes you make to the File pattern list box. Once you click on this command button, all changes you made to the File Pattern list box during the current File Pattern Definition session are discarded. The File Pattern list reverts to what it was before you began to modify it.

Set File Pattern Default

Use this command button to make the currently selected file pattern in the File Pattern list the default file pattern. The selected file pattern immediately moves to the top of the File Pattern list.

You may also make a file pattern the default by selecting a file pattern and clicking on the Up command button until the selected file pattern is at the top of the File Pattern list.

Delete A File Pattern

Use this command button to delete a selected file pattern from the File Pattern list.

Move A File Pattern Down

This command button will move a selected file pattern down the File Pattern list towards the bottom of the File Pattern list.

Accept File Pattern List Changes

This command button accepts all changes you make to the File Pattern list and makes them permanent.

Overview

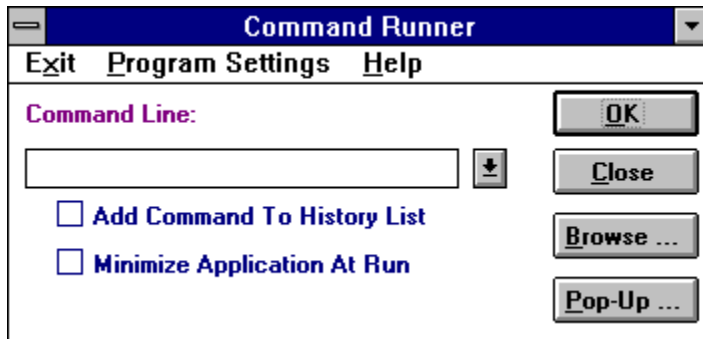
Have you ever wanted to have more control over how you run programs than the minimal control Program Manager gives you with its RUN command? Want no more! Command Runner provides the same functionality as the Program Manager RUN command and a lot more! Some of the features include:

- * A history list that remembers your commands in a history list so you can run them again (just like the Windows NT version of Program Manager's RUN command)
- * The ability to set the number of entries in the history list
- * Fully customizable user-defined file search patterns when browsing for files
- * The ability to turn the command history on and off
- * The ability to leave Command Runner running when you start another application
- * The ability to have Command Runner remember its location on the screen
- * The ability to have Command Runner be the top most window.
- * A Pop-Up Tool Bar with 12 user-defined user keys.

Using Command Runner

To start Command Runner, you need to find the Program Manager group the install program created and double-click on the Command Runner icon.

Once Command Runner loads, you will see a windows similar to the following:



To execute a program, simply type its name into the Command Line text box and press the OK button (or press <ALT-O> or press the <ENTER>) key.

Command History List

Add Command To History List

Minimize Application At Run

OK Button

Cancel Button

Browse Button

Using The Command History List

If you have used Command Runner a few times and have checked the 'Add Command To History List' check box, you will have some commands in the Command History List. To access the Command History List, click on the downward arrow to the right of the Command Line text box. You will see a list of programs you can scroll through. If you find a program you want to execute, double-click on that entry in the list. Command Runner automatically copies the entry to the Command Line text box. To run the application, click on the OK button (or press <ALT-O> or press the <ENTER> key.

Command History List

Using The Pop-Up Tool Bar

The Pop-Up Toolbar is a small pop-up windows that has 12 user buttons on it. To define these buttons, click on the PROGRAM SETTINGS -> USER KEY DEFINE ... menu item on the main Command Runner screen.

To close the Pop-Up Tool Bar, position the mouse cursor over any of the user keys and click the right mouse button.

When you click on the Pop-Up ... button on the main Command Runner screen, the Pop-Up Tool Bar appears on the screen. If you have set the Remember Screen Position checkbox on the User Settings screen (you get this screen when you select PROGRAM SETTINGS -> USER KEY DEFINITION ...) the Pop-Up Tool Bar appears on the screen where it appeared the last time you called it up. If you did not check the Remember Screen Position checkbox, the Pop-Up Tool Bar appears in the middle of the screen.

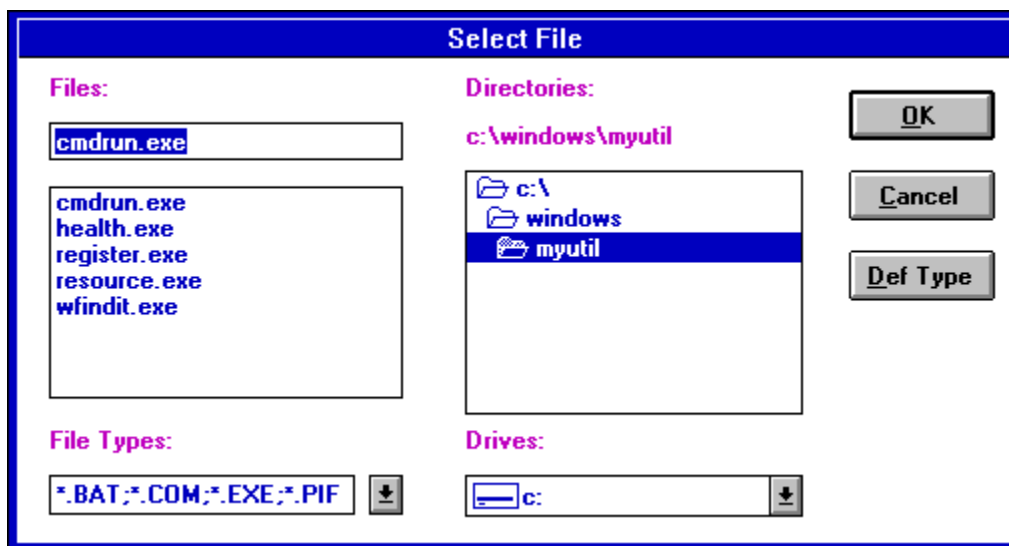
To move the Pop-Up Tool Bar, just click and hold the left mouse button in the title bar (the top of the Pop-Up Tool Bar that has the System Resources % and Memory Free KB information) and drag the window to any location on the screen. When the Pop-Up Tool Bar is in the location you want, release the left mouse button.

To close the Pop-Up Tool Bar, position the mouse cursor over any of the user keys and click the right mouse button.

Pop-Up Tool Bar

Browse Drive(s) For Application

If you do not know the name and/or location of the application you wish to run, and it is not in the Command History list, click on the Browse button. This will display the Browse window which will let you select drives, directories, and ultimately the file you wish to execute.



Application To Run Text Box

File List Box

File Types List

Directory List Box

Drive List Box

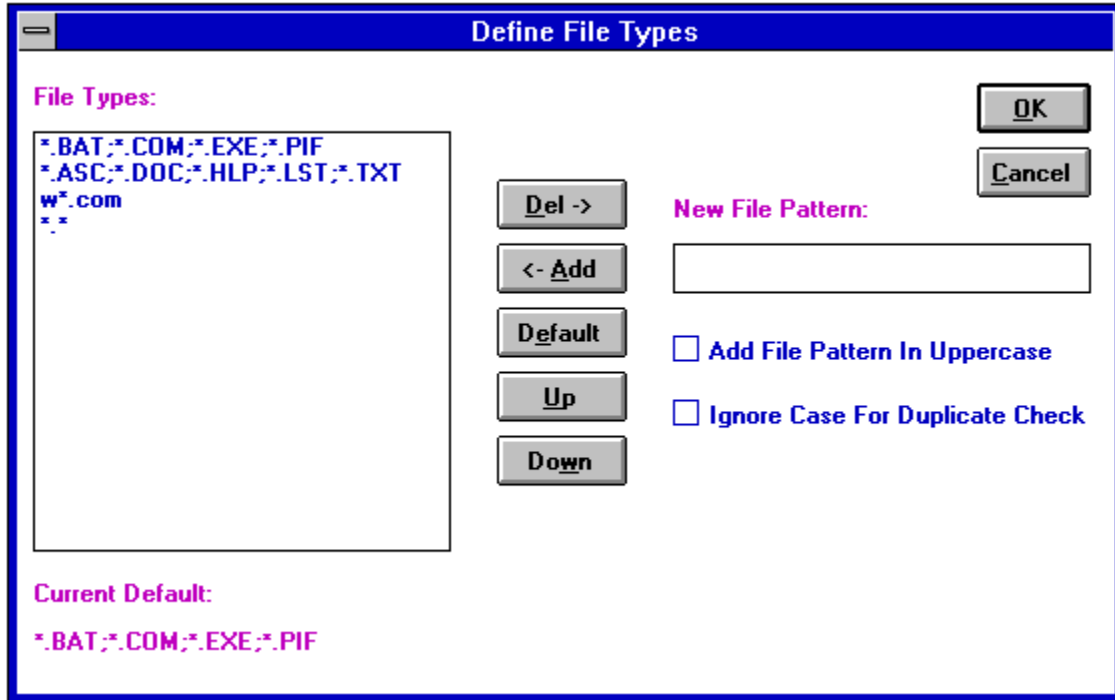
OK Command Button

Cancel Command Button

Def Type Command Button

Defining File Type List Entries

One of the unique features Command Runner offers is the ability to define your own file types list. If you wish to define your own filetype list, you may click on the Def Type button and that will display a screen that will allow you to define your own file types for file location and to select a default file type entry.



File Type List Box

Del -> Command Button

<- Add Command Button

Default Command Button

Up Command Button

Down Command Button

OK Button

Cancel Button

New File Pattern Text Box

Add File Pattern In Uppercase

Ignore Case For Duplicate Check

Pop-Up Tool Bar Button

This button will bring up the Pop-Up Tool Bar. This tool bar consists of 12 commands you define. Features of the Pop-Up Tool Bar include:

- * You click on the title bar of the Pop-Up Tool Bar and drag the tool bar to any location on the screen
- * The Pop-Up Tool Bar title bar shows a running display of free system resources (a %) and free system memory (in KiloBytes)
- * You can set the Pop-Up Tool Bar to start automatically when you start Command Runner
- * You can set the Pop-Up Tool Bar to always appear in the same location on the screen when you call it up
- * You close the Pop-Up Tool Bar with a simple click of the right mouse button on any of the command buttons.

Pop-Up Tool Bar User Commands

These buttons allow you to execute your own, pre-defined commands.

Click on the PROGRAM SETTINGS -> USER KEY DEFINE ... menu item from the main Command Runner screen to set your Pop-Up Tool Bar User Key definitions.

User Key Description

This field allows you to type in the name of the user key you are defining. This name appears on the key face when you display the Pop-Up Tool Bar.

The size of this field is 12 characters.

Command Line Definition

This field allows you to type in the command line you wish Command Runner to execute when you press the command line's associated key on the Pop-Up Tool Bar.

If you do not know the exact path and/or name of the application, place the cursor in either the COMMAND or WORKING DIRECTORY field of the key you wish to define and click on the BROWSE button. You will see a screen similar to the Browse screen you see when you click the BROWSE button from the main Command Runner screen. Select the file you wish to use as the user key command line and click on the OK button. You will see the COMMAND and WORKING DIRECTORY fields filled in for you.

Working Directory

This field allows you to type in the working directory you wish Command Runner to use when it executes the command line you typed in the COMMAND field. If you enter no working directory, Command Runner defaults to the directory the command is located in..

If you do not know the exact path, name, or working directory of the application, place the cursor in either the COMMAND or WORKING DIRECTORY field of the key you wish to define and click on the BROWSE button. You will see a screen similar to the Browse screen you see when you click the BROWSE button from the main Command Runner screen. Select the file you wish to use as the user key command line and click on the OK button. You will see the COMMAND and WORKING DIRECTORY fields filled in for you. You will notice that the WORKING DIRECTORY field is defaulted to the directory the command listed in the COMMAND field is located in..

Remember Screen Position Checkbox

This checkbox allows you to choose whether or not you want Command Runner to show the Pop-Up Tool Bar in the same location or not.

If you do not check this checkbox, the Pop-Up Tool Bar always appears in the middle of the screen. If you check this checkbox, the Pop-Up Tool Bar remembers its location for future start-ups.

You can check this checkbox and then click on the Pop-Up Tool Bar's title bar to move the Pop-Up Tool Bar anywhere you want on the screen. Then, when you exit the Pop-Up Tool Bar and the Remember Screen Checkbox is checked, Command Runner will save the exact location of the Pop-Up Tool Bar. The next time you bring up the Pop-Up Tool Bar, it will appear in the same location you moved it to previously.

Auto-Start Pop-Up Tool Bar Checkbox

Check this checkbox to tell Command Runner to automatically bring up the Pop-Up Tool Bar when you start Command Runner.

OK Button

Clicking on this button will accept all the changes you have made on the User Settings Screen.

Cancel Button

Clicking on this button will discard all changes you have made on the User Settings screen.

Browse Button

If you do not know the exact path and/or name of the application, place the cursor in either the COMMAND or WORKING DIRECTORY field of the key you wish to define and click on the BROWSE button. You will see a screen similar to the Browse screen you see when you click the BROWSE button from the main Command Runner screen. Select the file you wish to use as the user key command line and click on the OK button. You will see the COMMAND and WORKING DIRECTORY fields filled in for you.

Clear Button

Use this command to clear the information from the DESCRIPTION, COMMAND and WORKING DIRECTORY fields of a particular user key.

To use, place the cursor in one of the three fields pertaining to the user key you wish to clear and click the CLEAR button. Answer "Yes" to the ensuing prompt and Command Runner will clear the three fields.

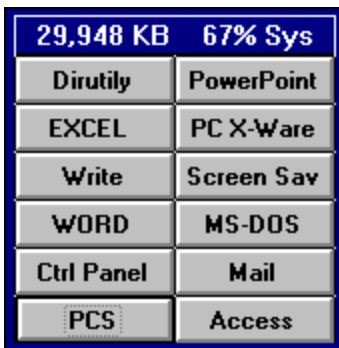
Pop-Up Tool Bar

The Pop-Up Toolbar is a small pop-up windows that has 12 user buttons on it. To define these buttons, click on the PROGRAM SETTINGS -> USER KEY DEFINE ... menu item on the main Command Runner screen.

When you click on the Pop-Up ... button on the main Command Runner screen, the Pop-Up Tool Bar appears on the screen. If you have set the Remember Screen Position checkbox on the User Settings screen (you get this screen when you select PROGRAM SETTINGS -> USER KEY DEFINITION ...) the Pop-Up Tool Bar appears on the screen where it appeared the last time you called it up. If you did not check the Remember Screen Position checkbox, the Pop-Up Tool Bar appears in the middle of the screen.

To move the Pop-Up Tool Bar, just click and hold the left mouse button in the title bar (the top of the Pop-Up Tool Bar that has the System Resources % and Memory Free KB information) and drag the window to any location on the screen. When the Pop-Up Tool Bar is in the location you want, release the left mouse button.

To close the Pop-Up Tool Bar, position the mouse cursor over any of the user keys and click the right mouse button.



[Setup](#)

